



Instructions for the placement of a Scotsman ice machine on a **ICS730, ICS1360, ICS1790** ice cart systems.

Overview

The bin top is secured to the bin at the factory and has a large opening that must be covered by ice machine(s), filler panel(s) and/or coverplate. Each bin ships with the appropriate coverplate, filler panels, gasket, and sealant to support most Scotsman ice machines. The general procedure for installing the top is the same for all applications, however coverplate, filler panel, and gasket placement varies by bin/machine configuration.

Installation

1. Identify appropriate drawing for the specific ice machine and bin configuration using the table on page 2.
2. Position filler panel(s) according to location noted on appropriate drawing.
3. Peel paper backing from adhesive portion of filler panel(s) and apply to bin top.
4. Apply inner gasket around perimeter of ice drop opening. Do not overlap gasket.
5. Position and apply outer gasket according to location noted on appropriate drawing.
6. Apply sealant to inside edge of inner gasket that will seal machine and to bin.
7. Carefully position ice maker onto bin.

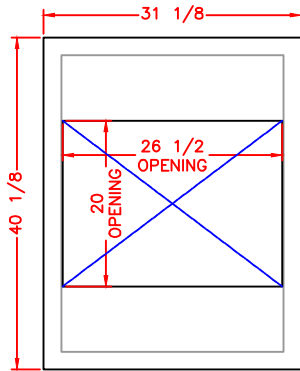
ICS730, ICS1360, ICS1790 Bin Top Installation Instructions

Contents

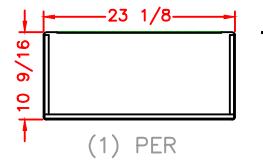
Overview	Page 1
Installation	Page 1
ICS730.....	Page 3
ICS730 - Single 22" Cuber	Page 3
ICS730 - Single 30" Cuber	Page 3
ICS730 - Single EH330/430 or MC330L/430.....	Page 4
ICS730 - Single 22" Flake or Nugget	Page 4
ICS730 - Single 30" Flake or Nugget	Page 4
ICS1360.....	Page 5
ICS1360 - Single 22" Cuber	Page 5
ICS1360 - Two 22" Cubers	Page 5
ICS1360 - Single 30" Cuber	Page 6
ICS1360 - Single EH330/430 or MC330L/430	Page 6
ICS1360 - Single 48" Cuber	Page 6
ICS1360 - Single 22" Flake/Nugget	Page 6
ICS1360 - Two 22" Flake or Nugget	Page 7
ICS1360 - Single 30" Flake/Nugget.....	Page 7
ICS1360 - Single 42" Flake	Page 7
ICS1790.....	Page 8
ICS1790 - Two 30" Cubers	Page 8
ICS1790 - Two EH330/430 or MC330L/430	Page 8
ICS1790 - Single 48" Cuber	Page 9
ICS1790 - Two 22" Flake or Nugget	Page 9
ICS1790 - Two 30" Flake/Nugget	Page 9
ICS1790 - Single 42" Flake	Page 9

ICS730

Bin top and opening:



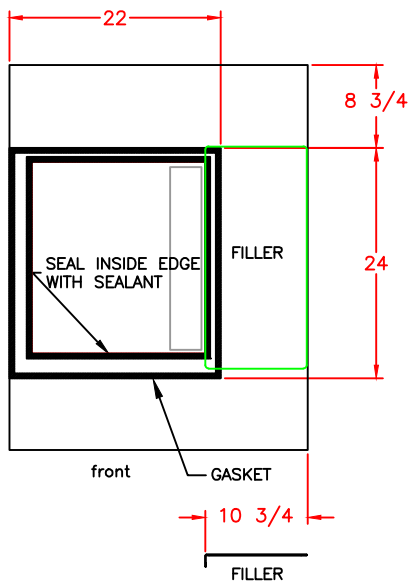
Filler Panel:



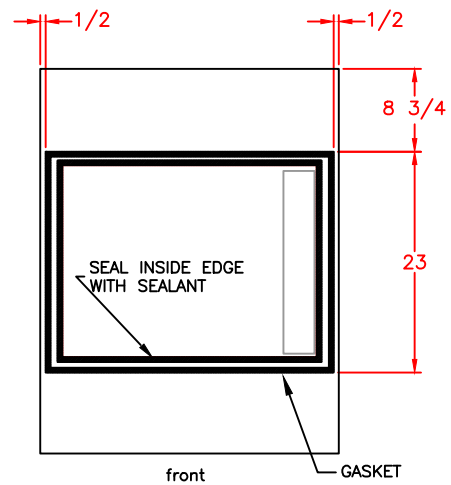
Also included:

- Self adhesive gasket
- Sealant

ICS730 - Single 22" Cuber



ICS730 - Single 30" Cuber

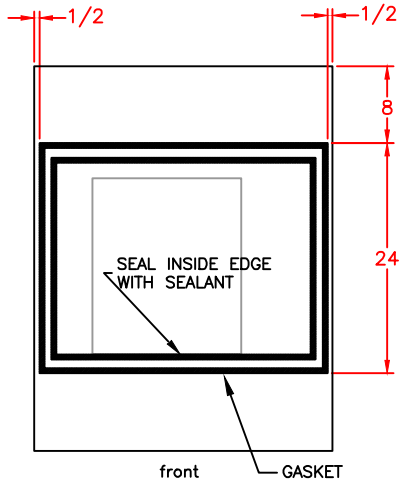


NO FILLER PANEL REQUIRED

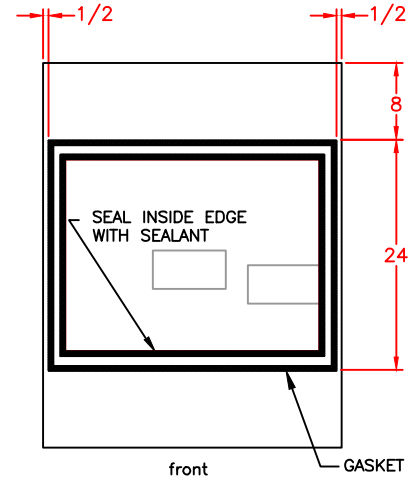
ICS730, ICS1360, ICS1790 Bin Top Installation Instructions

ICS730 - Single EH330/430 or MC330L/430

ICS730 - Single 30" Flake or Nugget

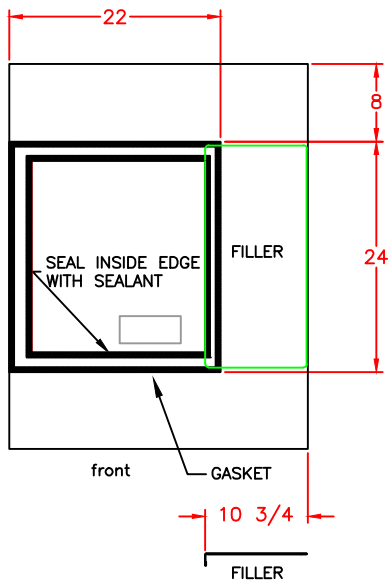


NO FILLER PANEL REQUIRED



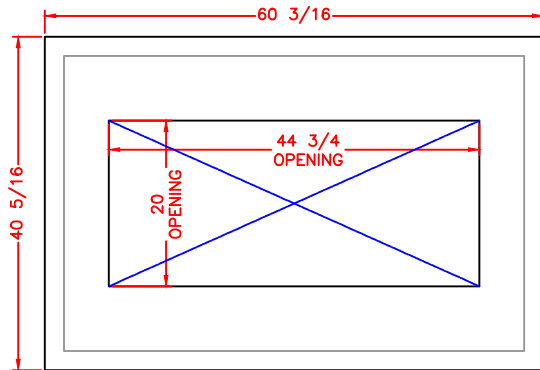
NO FILLER PANEL REQUIRED

ICS730 - Single 22" Flake or Nugget

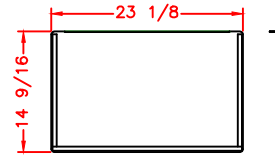


ICS1360

Bin top and opening:



Filler Panels (2):

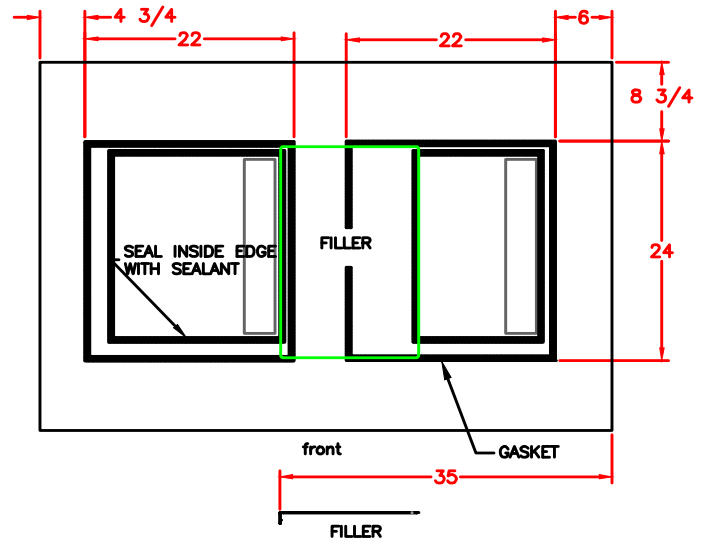
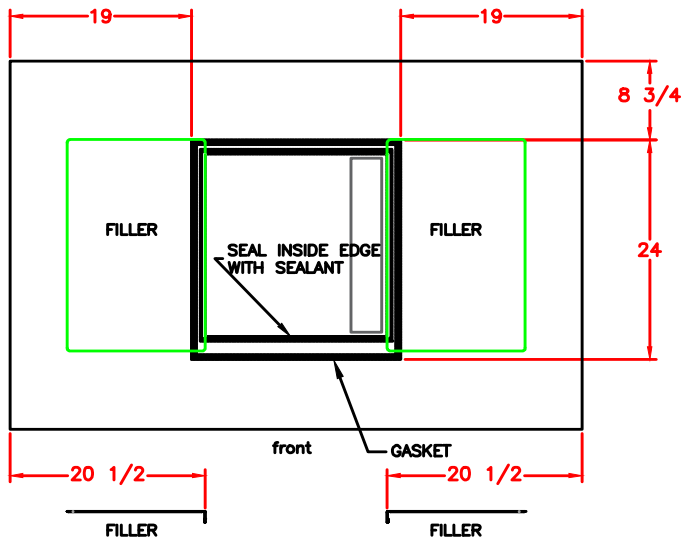


Also included:

- Self adhesive gasket
- Sealant

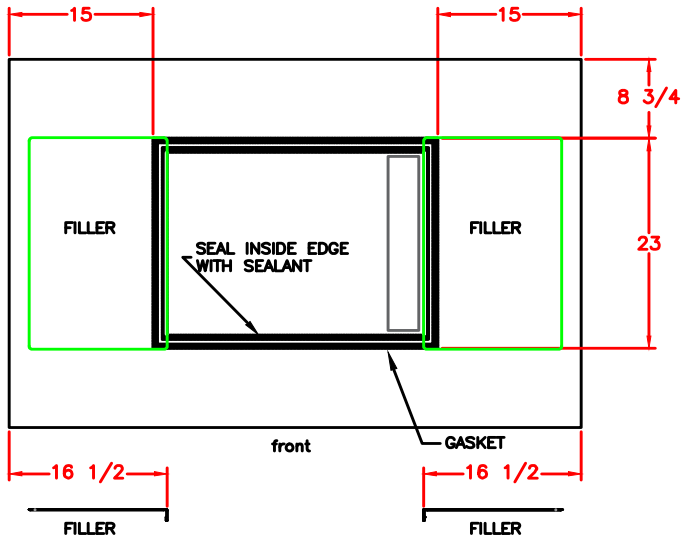
ICS1360 - Single 22" Cuber

ICS1360 - Two 22" Cubers

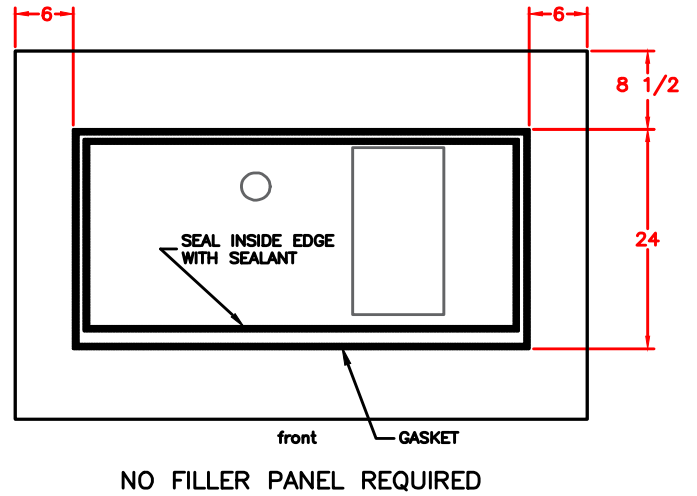


ICS730, ICS1360, ICS1790 Bin Top Installation Instructions

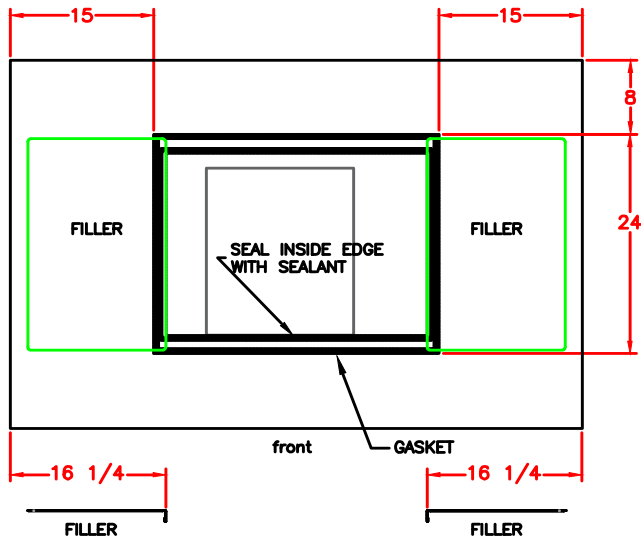
ICS1360 - Single 30" Cuber



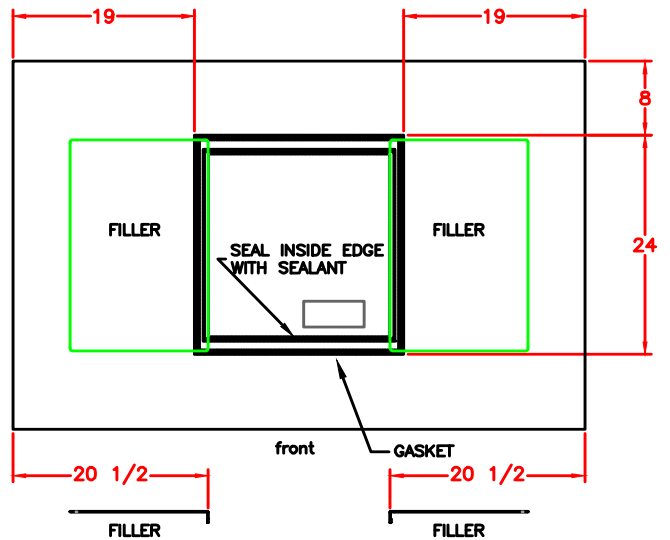
ICS1360 - Single 48" Cuber



ICS1360 - Single EH330/430 or MC330L/430

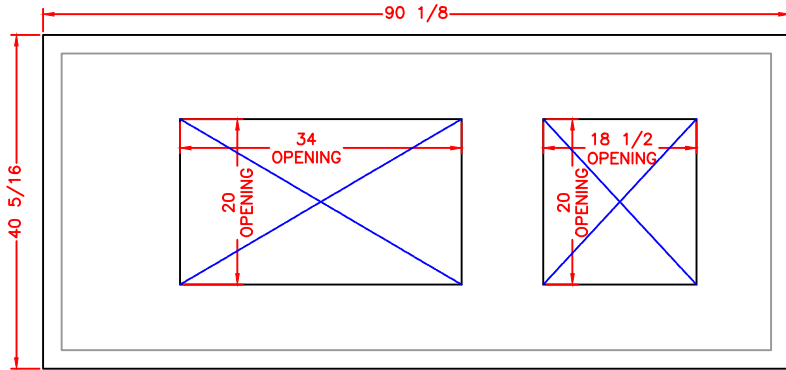


ICS1360 - Single 22" Flake/Nugget



ICS1790

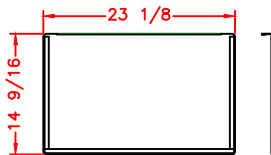
Bin top and opening:



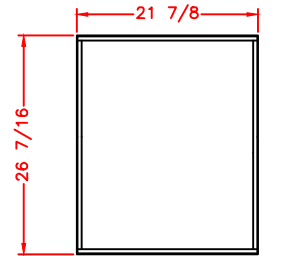
Also included:

- Self adhesive gasket
- Sealant

Filler Panel:

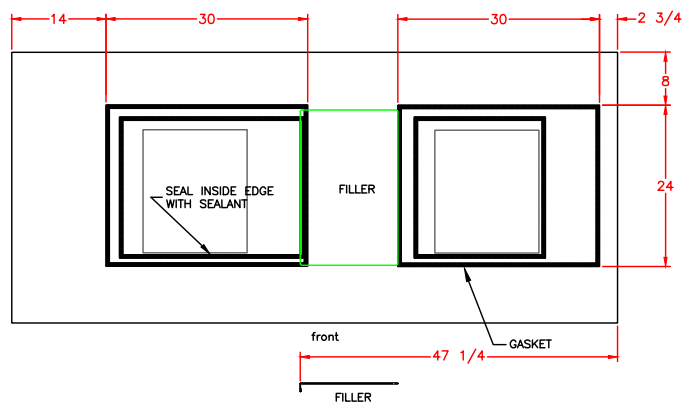
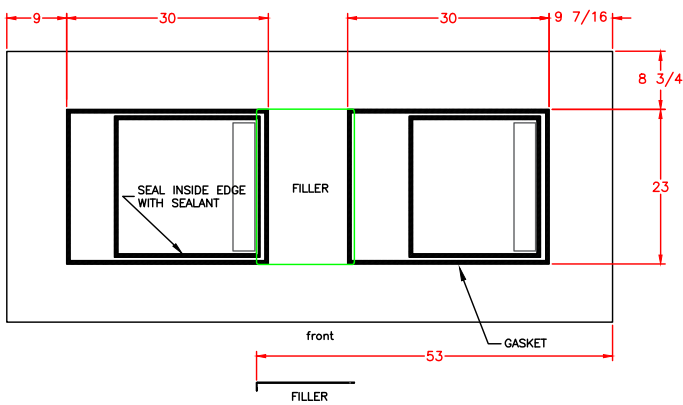


Cover Plate:



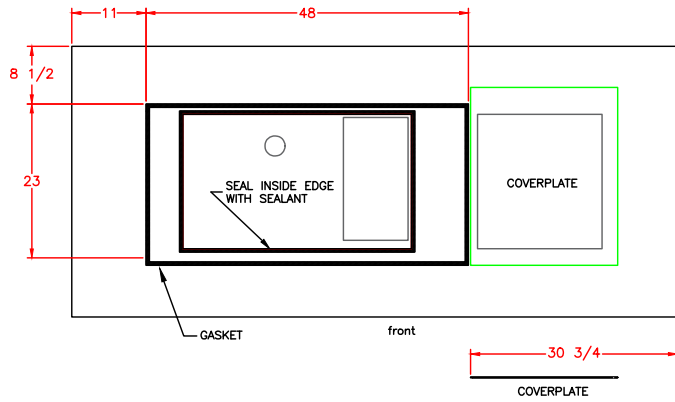
ICS1790 - Two 30" Cubers

ICS1790 - Two EH330/430 or MC330L/430

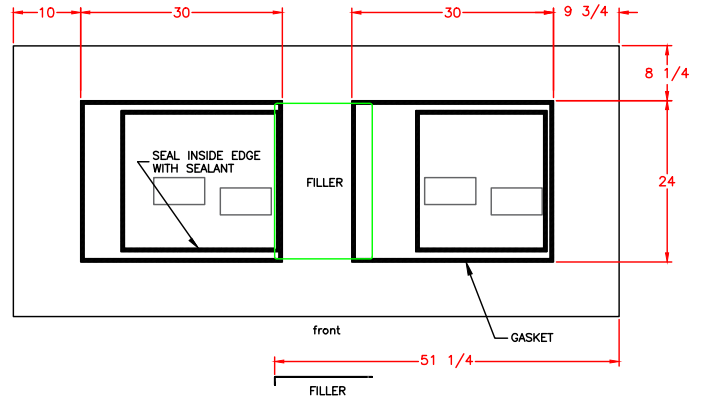


ICS730, ICS1360, ICS1790 Bin Top Installation Instructions

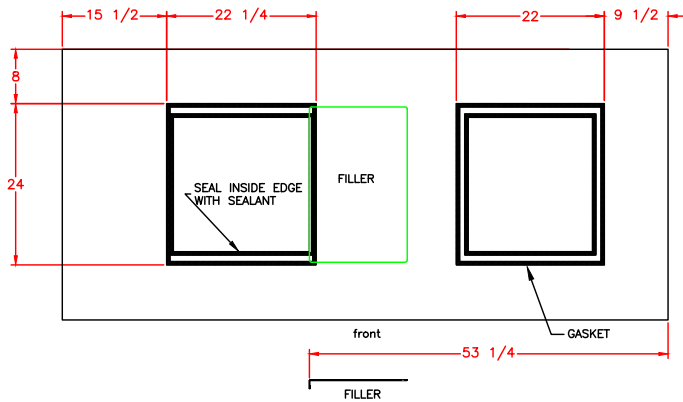
ICS1790 - Single 48" Cuber



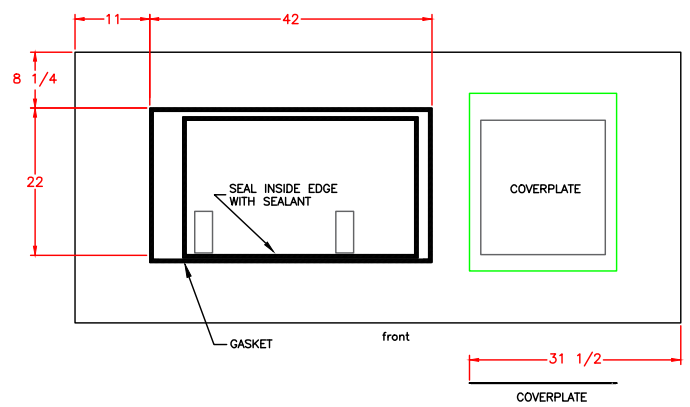
ICS1790 - Two 30" Flake/Nugget



ICS1790 - Two 22" Flake or Nugget



ICS1790 - Single 42" Flake



SCOTSMAN ICE SYSTEMS

101 Corporate Woods Parkway

Vernon Hills, IL 60061

800-726-8762

www.scotsman-ice.com